

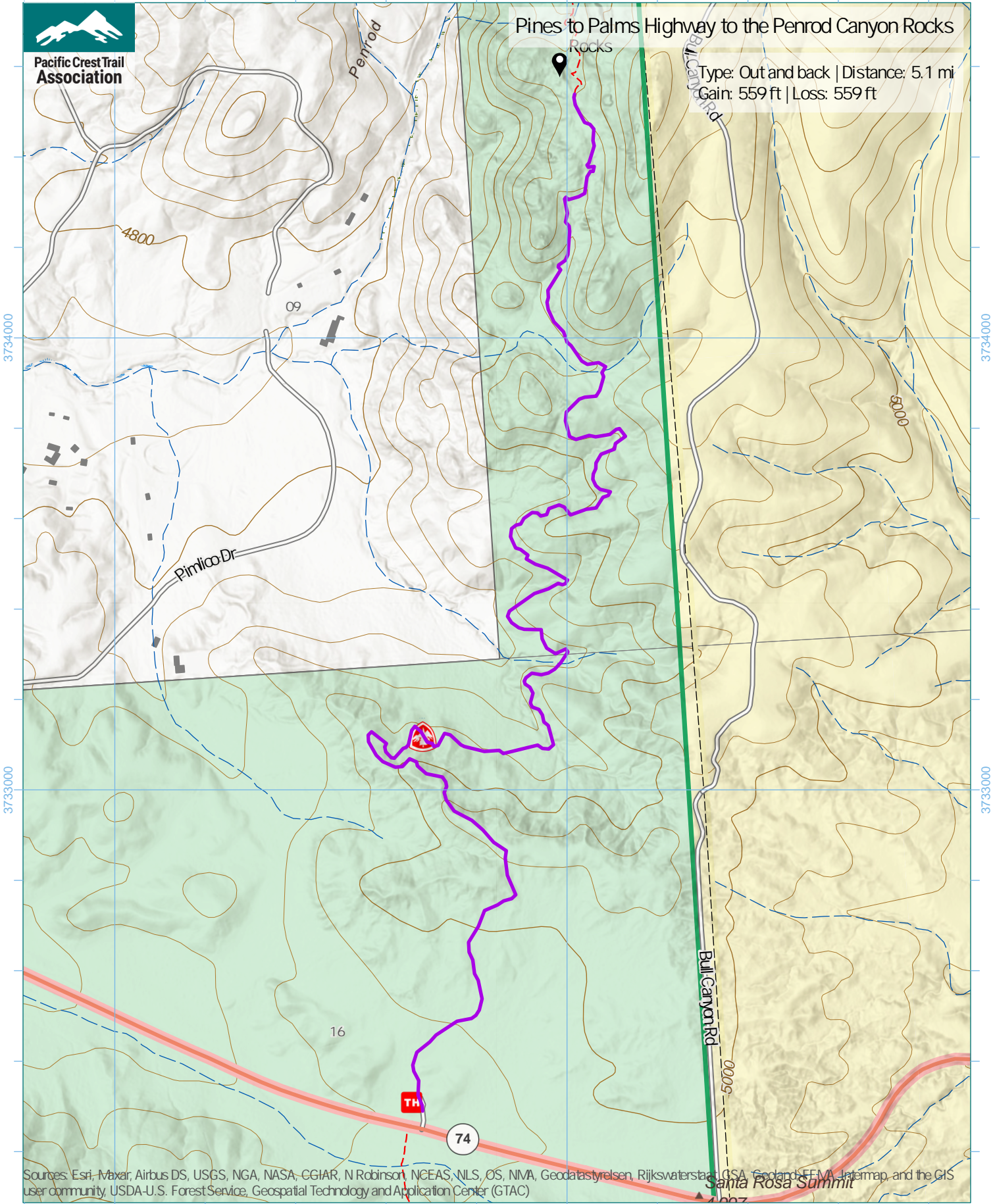
1096000

1097000

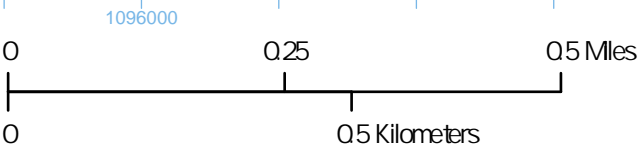


Pines to Palms Highway to the Penrod Canyon Rocks

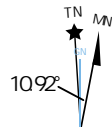
Type: Out and back | Distance: 5.1 mi
Gain: 559 ft | Loss: 559 ft



Sources: Esri, Maxar, Airbus DS, USGS, NGA, NASA, CGIAR, N Robinson, NCEAS, NLS, OS, NIMA, Geodatasystemen, Rijkswaterstaat, GSA, Geoland, FEMA, Intermap, and the GIS user community, USDA-U.S. Forest Service, Geospatial Technology and Application Center (GTAC)



1 inch equals 917 feet
1:11,000
WGS 1984 UTM Zone 10N



Trip data by PCTA
Basemap by US Forest Service
Contour interval: 40ft